

## Product Datasheet



# Lamin B1 Antibody

Catalog No: AB0054

Reactivity: Human Mouse Rat

Isotype: Rabbit IgG

Applications: WB IHC ICC/IF IP

[www.biopple.cn](http://www.biopple.cn)

### Information

**UniProt ID:** P20700

**All Names:** LMN; ADLD; LMN2; LMNB; Lamin B1;

**Form:** Liquid

**Storage instructions:** Store at +4°C short term. Store at -20°C long term. Avoid freeze / thaw cycle.

**Storage buffer:** pH 7.4, 150mM NaCl, 0.02% sodium azide and 50% glycerol.

**Purity:** Affinity-chromatography

**Immunogen:** A synthesized peptide

**Molecular Wt.:** 70 kDa

### Application

WB: 1:3000~1:10000

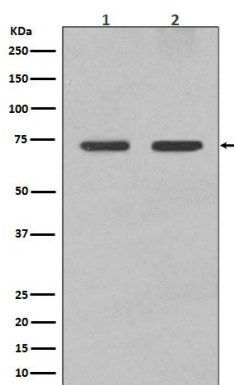
IHC: 1:50~1:200

ICC/IF: 1:50~1:200

IP: 50

### Background

The nuclear lamina consists of a two-dimensional matrix of proteins located next to the inner nuclear membrane. The lamin family of proteins make up the matrix and are highly conserved in evolution. During mitosis, the lamina matrix is reversibly disassembled as the lamin proteins are phosphorylated. Lamin proteins are thought to be involved in nuclear stability, chromatin structure and gene expression. Vertebrate lamins consist of two types, A and B. This gene encodes one of the two B type proteins, B1. Alternative splicing results in transcript variants and a duplication of this gene is associated with autosomal dominant adult-onset leukodystrophy (ADLD).



Western blot analysis of beta Tubulin expression in (1) Jurkat cell lysates; (2) NIH/3T3 cell lysate.

**For Research Use Only. Not For Use In Diagnostic Procedures.**

[www.biopple.cn](http://www.biopple.cn)