

## Product Datasheet

# GAPDH Mouse Monoclonal Antibody



Catalog No: AB0038 Reactivity: H, M, R, Mk, Ch, Ze

Isotype: Mouse IgG Applications: WB IHC ICC/IF IP FC

[www.biopple.cn](http://www.biopple.cn)

### Information

**UniProt ID:** P04406

**All Names:** aging-associated gene 9 protein; G3P; G3PD; GAPD; GAPDH; glyceraldehyde 3-phosphate dehydrogenase; Glyceraldehyde-3-phosphate dehydrogenase; MGC88685;

**Form:** Liquid

**Storage instructions:** Store at +4°C short term. Store at -20°C long term. Avoid freeze / thaw cycle.

**Storage buffer:** pH 7.4, 150mM NaCl, 0.02% sodium azide and 50% glycerol.

**Purity:** Affinity-chromatography

**Immunogen:** A synthesized peptide

**Molecular Wt.:** 37 kDa

### Application

WB: 1:3000~1:10000

IHC: 1:100~1:500

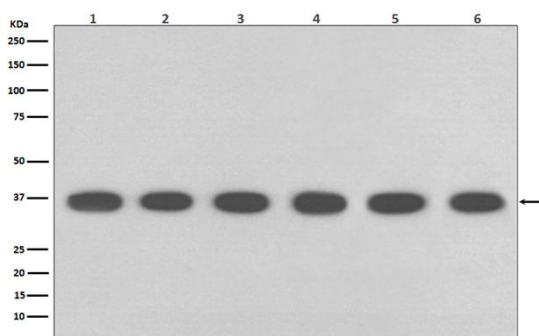
ICC/IF: 1:100~1:250

IP: 1:50

FC: 1:50

### Background

Glyceraldehyde 3 phosphate dehydrogenase (GAPDH) is well known as one of the key enzymes involved in glycolysis. GAPDH is constitutively abundant expressed in almost cell types at high levels, therefore antibodies against GAPDH are useful as loading controls for Western Blotting. Some pathology factors, such as hypoxia and diabetes, increased or decreased GAPDH expression in certain cell types.



Western blot analysis of (1) HeLa, (2) Jurkat whole cell lysates, (3) Mouse kidney lysates, (4) Mouse spleen lysates, (5) RAW 264.7 whole cell lysates, (6) Rat brain lysates with GAPDH Mouse Monoclonal Antibody.

**For Research Use Only. Not For Use In Diagnostic Procedures.**

[www.biopple.cn](http://www.biopple.cn)