

## Product Datasheet



# Actin Antibody

Catalog No: AB0033

Reactivity: Human Mouse Rat Chicken

Isotype: Rabbit IgG

Applications: WB IHC ICC/IF IP FC

[www.biopple.cn](http://www.biopple.cn)

### Information

**UniProt ID:** P68133

**All Names:** a actin; ACTA; ACTA1; Actin alpha skeletal muscle; Actin; actina; actine; aktin; Alpha Actin 1; Alpha skeletal muscle Actin; ASMA; CFTD; CFTD1; CFTDM; MPFD; NEM1; NEM2; NEM3; nemaline myopathy type 3;

**Form:** Liquid

**Storage instructions:** Store at +4°C short term. Store at -20°C long term. Avoid freeze / thaw cycle.

**Storage buffer:** pH 7.4, 150mM NaCl, 0.02% sodium azide and 50% glycerol.

**Purity:** Affinity-chromatography

**Immunogen:** A synthesized peptide

**Molecular Wt.:** 42 kDa

### Application

WB 1:3000~1:10000

IHC 1:50~1:200

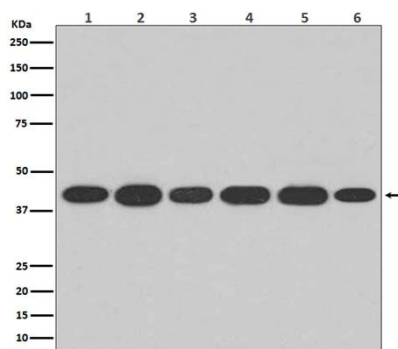
ICC/IF 1:50~1:200

IP 1:50

FC 1:50

### Background

Actins are highly conserved proteins that are involved in various types of cell motility and are ubiquitously expressed in all eukaryotic cells.



Western blot analysis of Actin expression in (1) Hela cell lysate; (2) Human fetal kidney lysate; (3) 3T3 cell lysate; (4) Mouse spleen lysate; (5) PC-12 cell lysate; (6) Rat heart lysate.

**For Research Use Only. Not For Use In Diagnostic Procedures.**

[www.biopple.cn](http://www.biopple.cn)