

## Product Datasheet



# Bcl-2 Antibody

Catalog No: CY6717

Reactivity: Human Mouse

Isotype: Rabbit IgG

Applications: WB IHC ICC/IF FC

[www.biopple.cn](http://www.biopple.cn)

### Information

**UniProt ID:** P10415

**All Names:** Apoptosis regulator Bcl-2; BCL2;

**Form:** Liquid

**Storage instructions:** Store at +4°C short term. Store at -20°C long term. Avoid freeze / thaw cycle.

**Storage buffer:** pH 7.4, 150mM NaCl, 0.02% sodium azide and 50% glycerol.

**Purity:** Affinity-chromatography

**Immunogen:** A synthesized peptide

**Molecular Wt.:** 26 kDa

### Application

WB 1:1000~1:2000

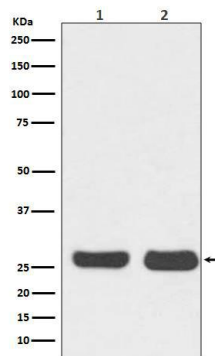
IHC 1:50~1:200

ICC/IF 1:50~1:200

FC 1:50

### Background

This gene encodes an integral outer mitochondrial membrane protein that blocks the apoptotic death of some cells such as lymphocytes. Constitutive expression of BCL2, such as in the case of translocation of BCL2 to Ig heavy chain locus, is thought to be the cause of follicular lymphoma. Two transcript variants, produced by alternate splicing, differ in their C-terminal ends.



Western blot analysis of Bcl-2 expression in (1) HeLa cell lysate; (2) NIH/3T3 cell lysate.

**For Research Use Only. Not For Use In Diagnostic Procedures.**

[www.biopple.cn](http://www.biopple.cn)