

Product Datasheet

MAP1LC3A Antibody



Catalog No: CY5528

Reactivity: Human Mouse Rat

www.biopple.cn

Isotype: Rabbit IgG

Applications: WB IHC ICC/IF IP FC

UniProt ID: Q9H492

All Names: MAP1LC3;LC3;LC3A;MAP1ALC3;MAP1BLC3 ;MAP1LC3A;

Form: Liquid

Storage instructions: Store at +4°C short term. Store at -20°C long term. Avoid freeze / thaw cycle.

Storage buffer: pH 7.4, 150mM NaCl, 0.02% sodium azide and 50% glycerol.

Purity: Affinity-chromatography

Immunogen: A synthesized peptide

Molecular Wt.: 16 kDa

Application

WB: 1:500~1:2000

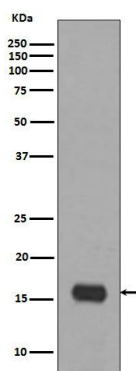
IHC: 1:50~1:200

ICC/IF: 1:50~1:200

IP: 1:50

Background

Autophagy marker Light Chain 3 (LC3) was originally identified as a subunit of microtubule-associated proteins 1A and 1B (termed MAP1LC3), and subsequently found to contain similarity to the yeast protein Apg8/Aut7/Cvt5 critical for autophagy. Three human LC3 isoforms (LC3A, LC3B, and LC3C) undergo post-translational modifications during autophagy. Cleavage of LC3 at the carboxy terminus immediately following synthesis yields the cytosolic LC3-I form. During autophagy, LC3-I is converted to LC3-II through lipidation by a ubiquitin-like system involving Atg7 and Atg3 that allows for LC3 to become associated with autophagic vesicles. The presence of LC3 in autophagosomes and the conversion of LC3 to the lower migrating form LC3-II have been used as indicators of autophagy.



Western blot analysis of MAP1LC3A expression in HeLa cell lysate.

For Research Use Only. Not For Use In Diagnostic Procedures.

www.biopple.cn