

Product Datasheet

Atg16L1 Antibody



Catalog No: CY6909

Reactivity: Human Mouse Rat

郑州白莘生物科技有限公司

Isotype: Rabbit IgG

Applications: WB IHC

www.zzbpsw.com

Information

UniProt ID: Q676U5

All Names: APG16 like 1; APG16L; APG16L beta; ATG16 autophagy related 16 like 1; ATG16A; ATG16L; Atg16l1; Autophagy related protein 16 1; IBD10; WD repeat domain 30; WDR30;

Form: Liquid

Storage instructions: Store at +4°C short term. Store at -20°C long term. Avoid freeze / thaw cycle.

Storage buffer: pH 7.4, 150mM NaCl, 0.02% sodium azide and 50% glycerol.

Purity: Affinity-chromatography

Immunogen: A synthesized peptide

Molecular Wt.: 68 kDa

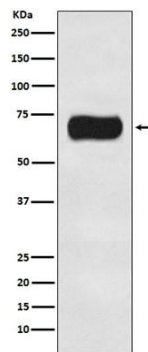
Application

WB 1:500~1:2000

IHC 1:50~1:200

Background

Plays an essential role in autophagy: interacts with ATG12-ATG5 to mediate the conjugation of phosphatidylethanolamine (PE) to LC3 (MAP1LC3A, MAP1LC3B or MAP1LC3C), to produce a membrane-bound activated form of LC3 named LC3-II. Thereby, controls the elongation of the nascent autophagosomal membrane.



Western blot analysis of Atg16L1 expression in HeLa cell lysate.

For Research Use Only. Not For Use In Diagnostic Procedures.

www.zzbpsw.com